



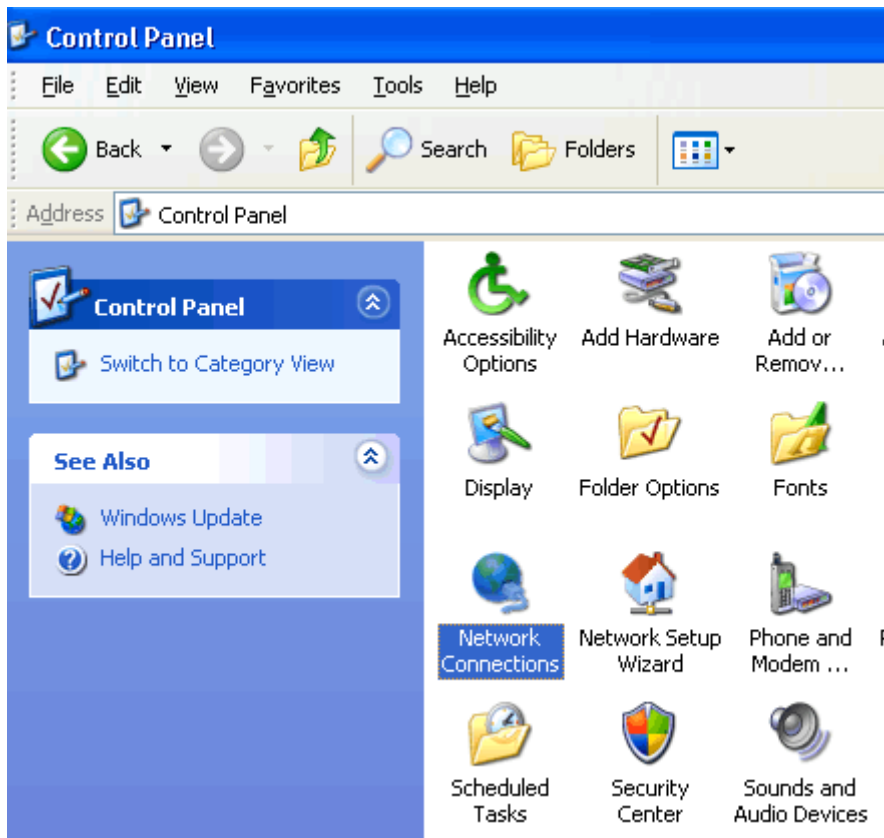
## Setup guide for Windows

The following is a step-by-step guide of how to setup a VPN connection using the Point to Point Tunneling Protocol on Windows XP.

Before you start please do the following:

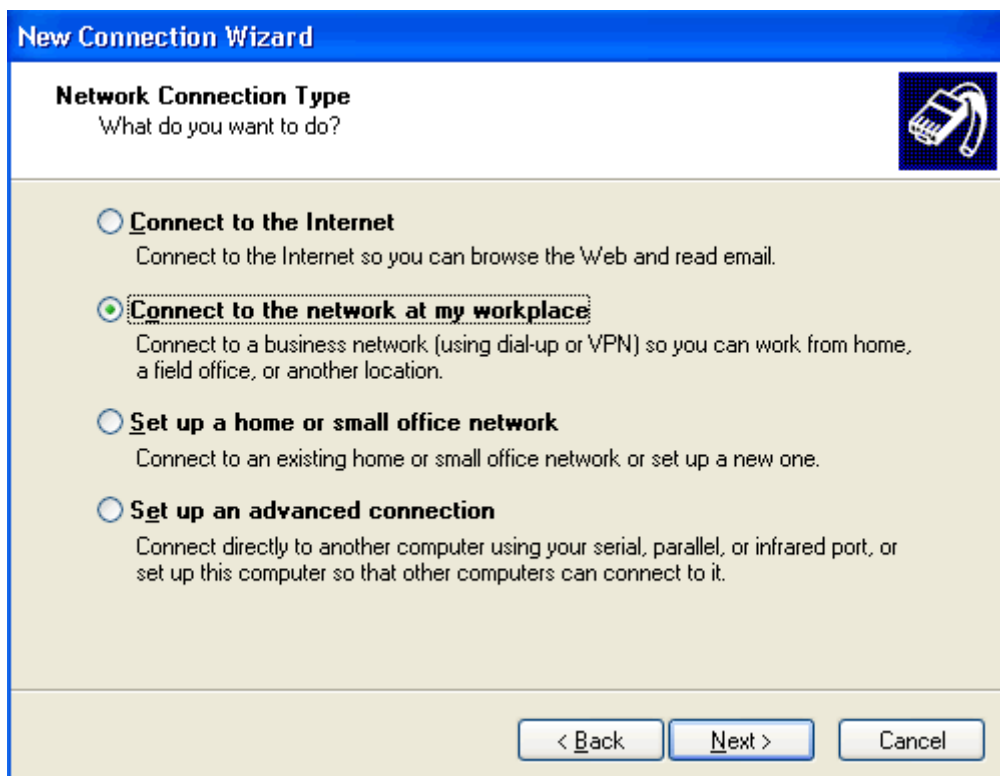
- 1- Turn off your Firewall or configure it to allow VPN traffic on port 1723
- 2- Check that PPTP Passthrough is enabled on your router
- 3- Check that GRE Protocol traffic is enabled on your router
- 4- Check that Port 1723 is not blocked on your router

The first thing you must do is go to the Control Panel and click on **Network Connections**.

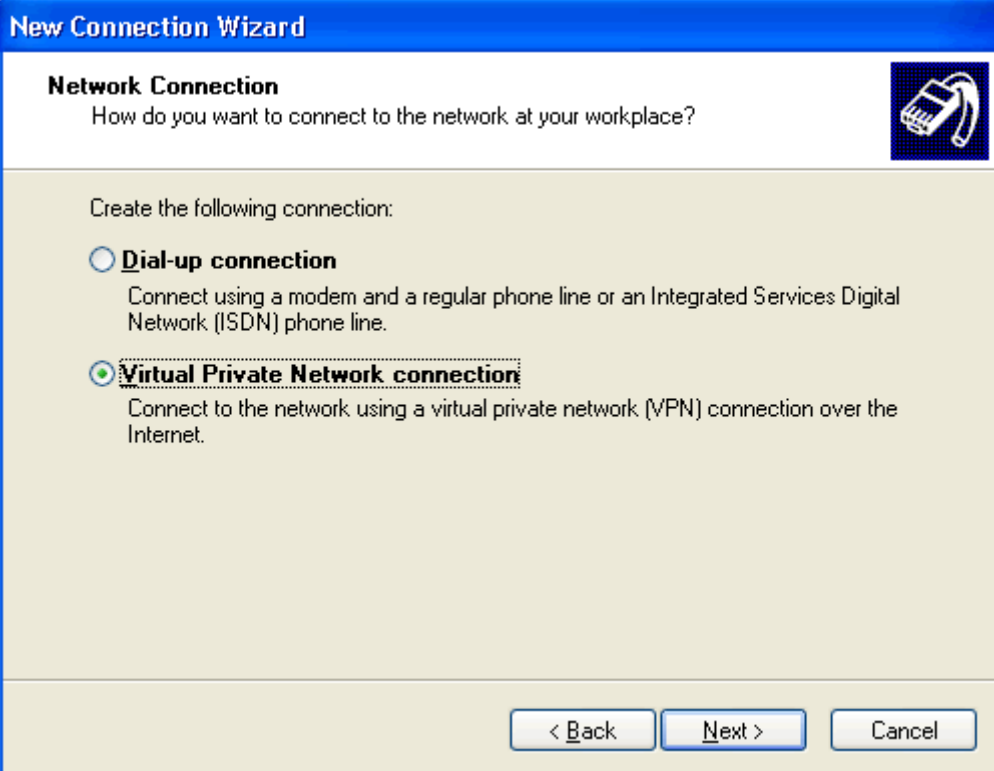


This will bring you to the Network Connections window which displays a list of your current network connections.

Click on the **Create New Connection** icon on the left.



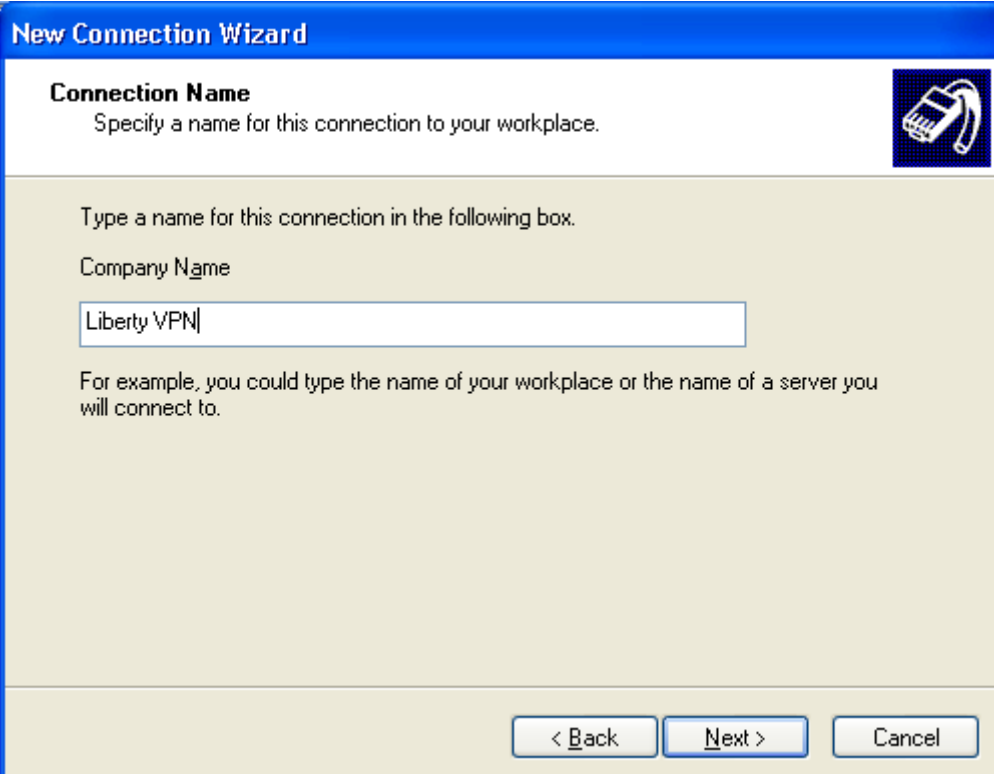
You are faced with three options - choose the second one, "**Connect to the network at my workplace**" and click Next.



The screenshot shows the 'New Connection Wizard' dialog box. The title bar is blue with the text 'New Connection Wizard'. Below the title bar, the main area has a blue header with the text 'Network Connection' and a question 'How do you want to connect to the network at your workplace?'. To the right of the question is a small icon of a modem. Below the question, the text 'Create the following connection:' is followed by two radio button options. The first option is 'Dial-up connection' with a description: 'Connect using a modem and a regular phone line or an Integrated Services Digital Network (ISDN) phone line.' The second option is 'Virtual Private Network connection' with a description: 'Connect to the network using a virtual private network (VPN) connection over the Internet.' The second option is selected. At the bottom of the dialog box are three buttons: '< Back', 'Next >', and 'Cancel'.

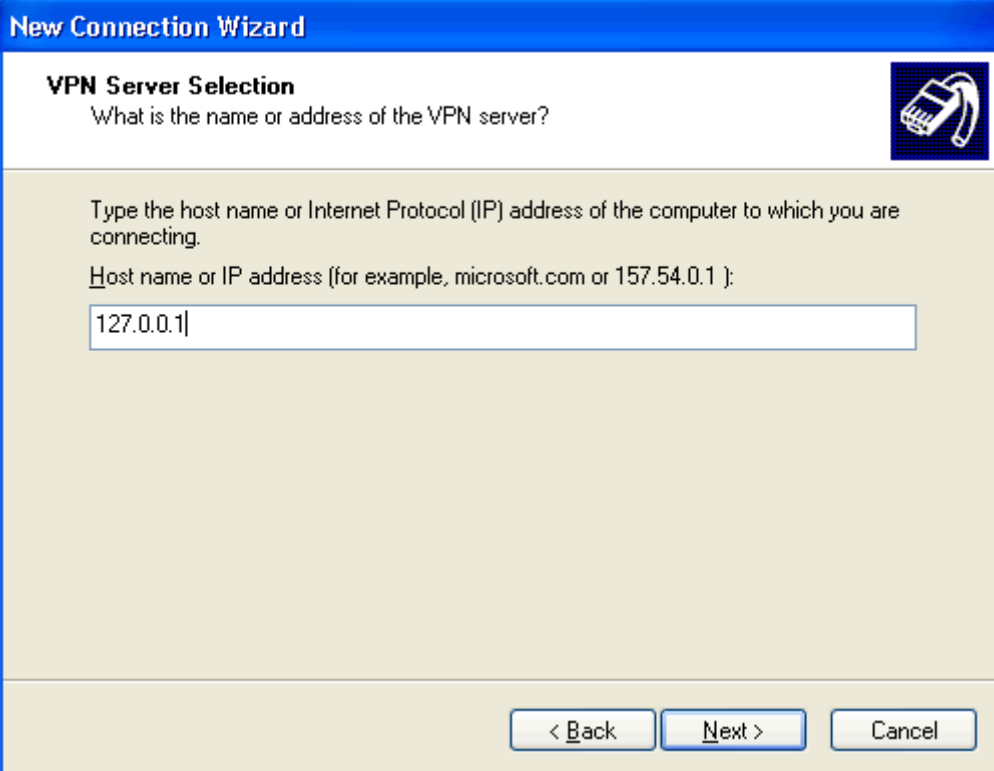
Now choose the second option, "**Virtual Private Network connection**" and click Next.

This will bring you to the window in which you should enter the name of the company or server you will be connecting to. After you have typed the name in, press Next.



The screenshot shows the 'New Connection Wizard' dialog box. The title bar is blue with the text 'New Connection Wizard'. Below the title bar, the main area has a blue header with the text 'Connection Name' and a question 'Specify a name for this connection to your workplace.' To the right of the question is a small icon of a modem. Below the question, the text 'Type a name for this connection in the following box.' is followed by the label 'Company Name' and a text input field containing the text 'Liberty VPN'. Below the input field, the text 'For example, you could type the name of your workplace or the name of a server you will connect to.' is displayed. At the bottom of the dialog box are three buttons: '< Back', 'Next >', and 'Cancel'.

This will bring you to the following window in which you must enter the host name or IP address of the VPN server. Please check your email for the Server IP.



**New Connection Wizard**

**VPN Server Selection**  
What is the name or address of the VPN server?

Type the host name or Internet Protocol (IP) address of the computer to which you are connecting.

Host name or IP address (for example, microsoft.com or 157.54.0.1):

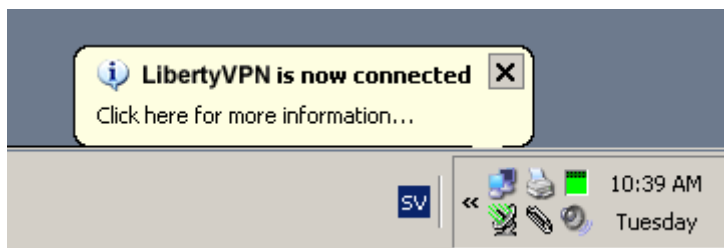
< Back   Next >   Cancel

You can now click Next Next and Finish, your new connection is now ready to use.

If you double click your VPN connection the logon window will appear.



Enter your username and password and click Connect.



You have now successfully connected to the VPN server!